

# APURBA

# APURBA

## ABOUT US

We provide key insights from your raw data.  
We deliver actionable intelligence that leads to better products.  
We impact your company's bottom line.



88-01819-242-248



info@apurbatech.com



399 Mohakhali New DOHS, 1st Floor, Lane# 29,  
Dhaka, Bangladesh

[www.apurba.com.bd](http://www.apurba.com.bd)



## INTELLIGENCE AMPLIFICATION Data Science as a Service



NATURAL  
LANGUAGE  
PROCESSING



BIG DATA  
ANALYTICS



MACHINE  
LEARNING

Natural Language Processing

Big Data Analytics

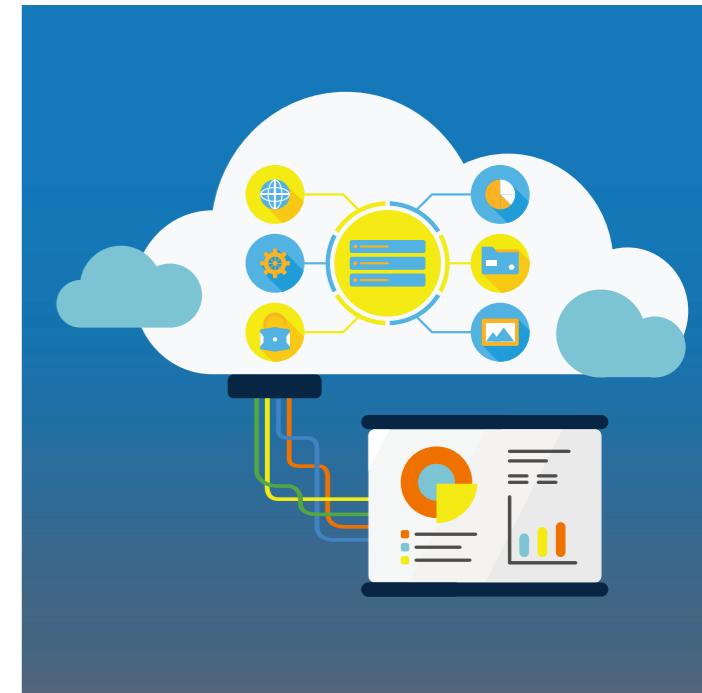
Machine Learning



## BIG DATA ANALYTICS

Apurba has developed a framework called **Big-Data-in-a-Box** which can be adapted to various applications.

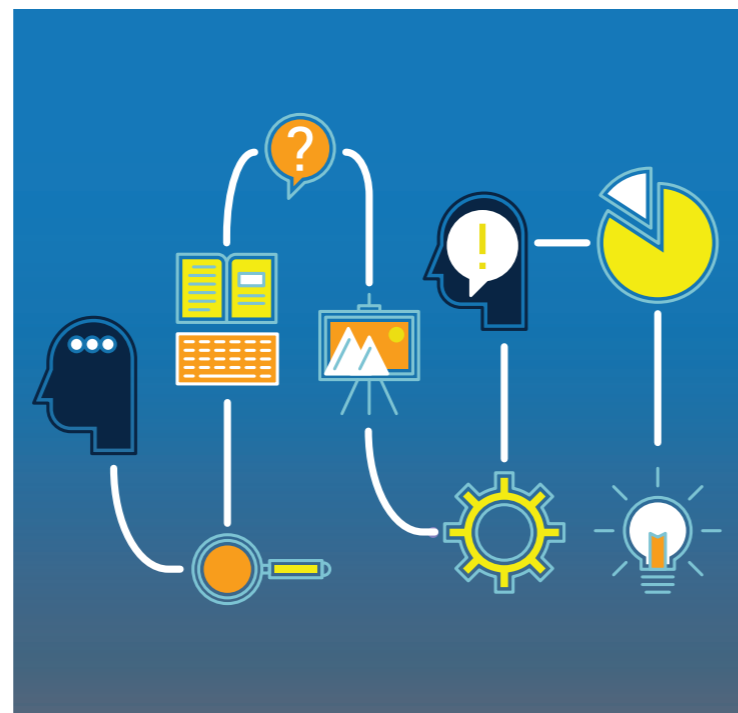
Defining Big Data is like defining what life is - it depends on who you ask. The simplest and closest definition is attributed to Gartner: Big data is high-volume, high-velocity, and/or high-variety information assets that demand cost-effective, innovative forms of information processing that enable enhanced insight, decision making, and process automation. Apurba built a novel big-data framework for different applications capable of handling Big-Data with the variety, veracity, and volume associated with these types of data.



## NATURAL LANGUAGE PROCESSING

Apurba leverages the power of Natural Language Processing (NLP) to understand your textual and tabular data (using OCR, PDF extraction, image processing and document understanding) to derive actionable intelligence.

Natural Language Processing is a way for computers to analyze, understand, and derive meaning from human language in an intelligent and useful way. Apurba has built an NLP Platform that has been successfully used to solve a range of problems in different industries, especially in the financial and healthcare sectors.



## MACHINE LEARNING

Apurba exploits the power of Machine Learning to model your complex data, solve your big puzzles and answer your tough questions.

Machine learning is the process by which a computer can learn to do something. That something might be as simple as reading the alphabet, or as complex as driving a car on its own and beyond. Machine learning concentrates on the theoretical foundations used by the computational aspects of these algorithms, using methods including neural networks, fuzzy systems, and evolutionary algorithms. Apurba has used various machine learning algorithm in solving real problems.

